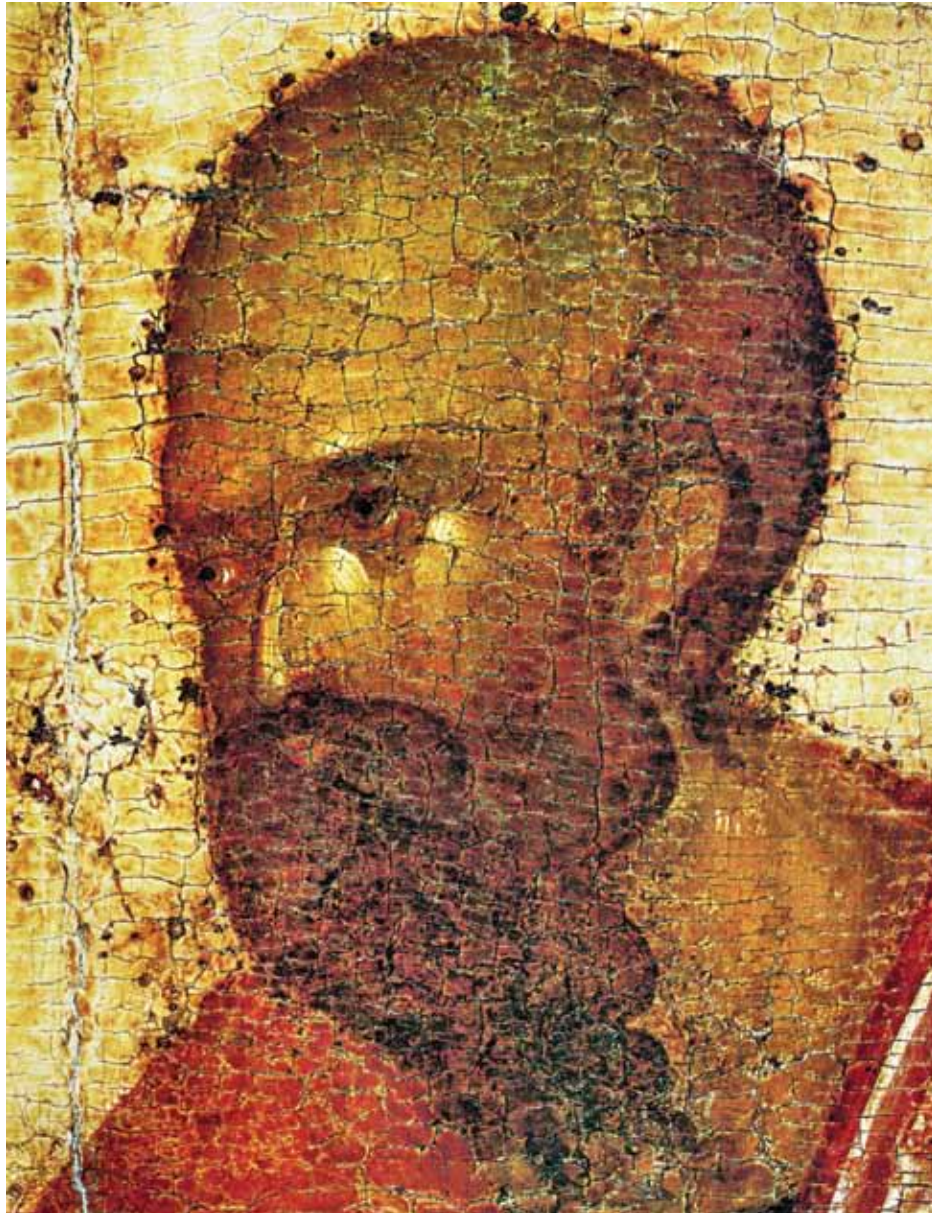


Following in the Footsteps of
Saint Paul



A Pilgrimage to Greece

September 8-18, 2012

Under the Spiritual Direction of

Reverend John E. Janze
Pastor of Saint Thomas More Parish · Irvine, CA

and

Reverend Michael Bucciarelli
Pastor of Our Lady of Lourdes Parish · Benson, AZ

Dear Fellow Pilgrim,

The term "pilgrim" refers to a person on a journey in search of God. In a real sense, this can describe each of our journeys toward God as we live our lives through our daily experiences.

We have made a number of pilgrimages to both the Holy Land and to Rome and each journey has deepened our faith as we were able to walk in the places that are at the foundation stones of our faith. This new pilgrimage continues to add to this treasure with the Journeys of St. Paul. In this pilgrimage we will be able to visit many of the places where St. Paul preached the gospel, built communities of believers, and corresponded with them in the Epistles we hold most sacred.

Finally, know that pilgrimages are joyful experiences where not only do we spend time in prayer and reflection, but we also have fun as we experience each other as a Christian community, making friends that last a lifetime.

We want you to have the most meaningful and spiritual journey of faith possible, all within this spirit of joy, and so we strongly encourage you to join our pilgrimage by signing up as soon as possible for this special experience.

Reverend John Janze, St. Thomas More · Irvine, CA
Reverend Michael Bucciarelli, Our Lady of Lourdes · Benton, AZ

Pilgrimage to Greece • September 8–18, 2012

TOUR PRICES

Air/Land/Sea* \$3,490.00

Land/Sea* \$2,040.00

Single Supplement \$470.00

*Per person, based on double occupancy · All prices quoted in US Dollars

Package Includes:

- Optional roundtrip economy class airfare, from TUS on Delta and Air France or from LAX on British Airways.
- Private, deluxe, air-conditioned motorcoach for all transfer and sightseeing with English-speaking guide.
- Roundtrip Athens airport (if applicable) and Piraeus port cruise transfers.
- Three nights accommodations in standard rooms at the Athens Gate Hotel (or similar) in Athens, with breakfast
- Private 4-day *Following in the Footsteps of Saint Paul Tour* including admissions to the archaeological sites and their museums, an English-speaking guide and accommodations at first-class Amalia hotels with breakfast and dinner daily.
- 4-day/3-night cruise to the Greek Islands and Turkey on Louis Cruises in *standard inside* category 'IB' cabins, with all meals. Upgrades available upon request.
- Half-day Athens city tour, including admission to the Acropolis and its museum.
- Porterage of one suitcase per person at all hotels and the pier. Excess luggage is subject to a \$3 per bag, per day fee.
- All hotel taxes, airport taxes (if applicable), visas, tips, and port and fuel charges.

MEALS: A total of nine breakfasts, three lunches and six dinners included.

SIGHTSEEING: As per the attached day-by-day itinerary.

PORTERAGE: One suitcase per person allowed (excess charge of \$3 per day, per bag will be collected).

FOR MORE INFORMATION CONTACT:

Betty Wood · (858) 459-7248 · trvlmama@san.rr.com

Reservations will be accepted on a "first-come, first-served" basis. Since the number of participants who can be accommodated on this tour is limited, early reservation is recommended to avoid disappointment. Prices are based on a minimum of 40 persons.

Reservation Application • Following in the Footsteps of Saint Paul Pilgrimage

PLEASE PRINT NAMES AS THEY APPEAR ON PASSPORT. SINGLE ROOM (\$470.00 add'l)

| | | | | |
|-------------------------|-------------------------|----------------|------------------------------|--------------------------|
| _____ Last Name | _____ First Name | _____ M.I. | _____ Passport N°/Country | _____ Expiration Date |
| _____ Last Name | _____ First Name | _____ M.I. | _____ Passport N°/Country | _____ Expiration Date |
| _____ Street Address | _____ City | _____ State | _____ Zipcode | |
| () Home Phone | () Office Phone | _____ Email | | |

Please fill out and enclose this coupon, along with a a deposit check in the amount of \$250.00 per person, made payable to:
Elizabeth Wood · P.O. Box 8181 · La Jolla, CA 92038 || To obtain cruise cabin upgrade please contact Betty Wood.

Following in the Footsteps of Saint Paul • Itinerary

Day 1: DEPART U.S.A.

Our pilgrimage begins today as we depart from the U.S.A. and journey to Greece via our optional trans-Atlantic flight.

Day 2: ATHENS

Upon arrival in Athens, we will be met by our English-speaking Homeric Tours representative and transferred by deluxe air-conditioned motorcoach to our hotel in Athens. Afternoon at leisure to rest or explore the city as one chooses.

Day 3: ATHENS–CORINTH CANAL–ANCIENT CORINTH–MYCENAE–EPIDAUROS–NAFLION

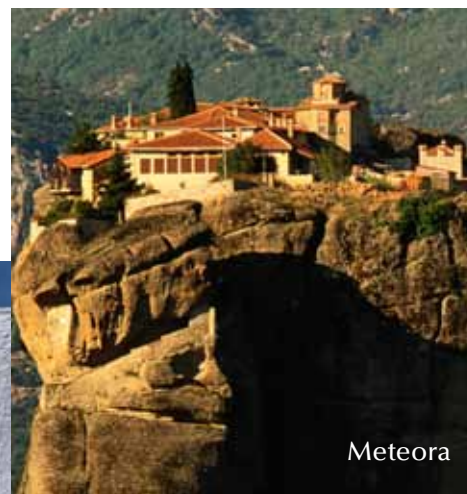
After breakfast, we will be met by our English-speaking Tour Escort and our deluxe air-conditioned motorcoach to begin our 4-day Classical Tour of Greece. We start with a scenic drive to the Corinth Canal, then on to Ancient Corinth where St. Paul preached. We will continue on to Mycenae to see the Beehive Tombs, the Treasury of Atreus, the Lion's Gate (Europe's oldest known monument), Agamemnon's Royal Palace, and the Citadel. Next is Epidaurus and its open-air theater and on to Nafplion. Check-in and dinner at our hotel. (B.D.)



Athens



Mykonos



Meteora

Day 4: OLYMPIA – DELPHI

After breakfast, we will visit the site of the original Olympic Games where we'll learn their history while we walk among the remains of the Gymnasium and the Temples of Hera and Zeus. Then we will visit the museum, which displays Praxiteles' magnificent statue of *Hermes*. Afterwards, we will move on to Delphi, crossing the plains of Ilia and Akhala and past Patras to Rion, where we will cross the channel to Antirion on the new, state-of-the-art suspension bridge, the longest in Europe. Then through the town of Nafpaktos before arriving in Delphi and our hotel for dinner. (B.D.)

Day 5: DELPHI – KALAMBAKA

After breakfast, we will tour of the ancient sanctuary of the god Apollo set on the slopes of Mount Parnassus. Hear about the Oracle, walk along the Sacred Way and tour the excavations, followed by a visit to the museum, where one can admire, among many other archaeological treasures, the *Charioteer*, a 5th century B.C. bronze statue. Drive north through the towns of Amphissa, Trikala and Lamia on our way to Kalambaka and our hotel for dinner. (B.D.)

Day 6: KALAMBAKA – METEORA – ATHENS

After breakfast, we will visit the fantastic Meteora with its twenty-four mountain monasteries. We have selected two of them to visit: Varlaam Monastery, famous for its frescoes, and St. Stephen's, featuring a unique collection of icons and an incredible panoramic view. This afternoon, on our return to Athens the highlights are Thermopylae, the site of the heroic battle of Leonidas' 300 Spartans against Xerxes' Persian army, Thebes, the setting of Sophocles' *Oedipus Rex*; and Marathon, where 10,000 Athenians defeated more than twice that number of Persian invaders. Return to Athens and our hotel, with the rest of the evening at leisure. (B.)

Day 7: ATHENS – PIRAEUS – MYKONOS – CRUISING

After breakfast, we will be transferred to the port city of Piraeus where we'll board our ship and sail to the Greek Islands and Turkey on our 3-night/4-day cruise. The first port of call will be Mykonos, a quintessential, yet sophisticated, Greek island. Find a table on the waterfront and

bask in the serenity of sunset over the picturesque harbor. Return to the ship and sail through the night. (B.L.D.)

Day 8: KUSADASI (EPHESUS) – PATMOS – CRUISING

This morning, after breakfast, an optional excursion to nearby Ephesus should not be missed, for here, history truly comes to life. Walking towards the ancient harbor, down a marble road rutted by the wheels of countless chariots, one passes such architectural masterpieces as the Magnesia Gate and the Library of Celsus before arriving at the Great Amphitheater where St. Paul was arrested and cast out of the city. In the late afternoon, we'll put into port on the island of Patmos, known as the site of the apocalyptic revelations of St. John the Divine, written during his exile. Here, an optional excursion includes a visit to the cave where he is said to have lived, now the site of the Monastery of the Apocalypse. In the 11th century, the Abbot Christodoulos founded the Monastery of St. John. Here, priceless icons and manuscripts are on display for all to see. We then return to the ship and sail through the night. (B.L.D.)

Day 9: SANTORINI – CRUISING

After breakfast, we will disembark on Santorini, spending the entire day on what is perhaps the most breathtaking of all Greek islands. The town of Fira, and its whitewashed houses, narrow streets, open-air cafes and glittering boutiques, clings to the cliffs, accessible mostly by cable car or donkey. Return to the ship and sail through the night. (B.L.D.)

Day 10: PIRAEUS – ATHENS

After breakfast onboard the ship, we will disembark and be met by our English-speaking tour guide to transfer to Athens and begin a half-day Athens city tour. Today, we will visit such sites as the Tomb of the Unknown Soldier, the Royal Palace and the Pan-Athenian Stadium, the Temple of Olympian Zeus and the world famous Acropolis. We will then drive along the main avenues of the city, viewing the Academy, the University, the National Library and the Temple of Zeus before returning to our hotel with the rest of the day at leisure. (B.)



Day 11: ATHENS – AIRPORT – DEPART FOR U.S.A.

After breakfast, we will transfer to the airport for our return flight home, bringing with us the glories of Ancient Greece and memories of good times and even better friends. (B.)

Information • Terms • Conditions

RESERVATIONS AND PAYMENT:

A deposit of \$250.00 per person is requested when booking. Final payment is due by June 30, 2012. Payment may be made by personal or cashiers' check.

CANCELLATIONS AND REFUNDS:

Should you have to cancel your trip, we will do our best to refund your payment, however, some penalties may apply. If you purchase trip insurance, please note, the premium is NOT refundable. Before departure, if you cancel:

- More than 96 days prior, you will receive a full land/sea refund plus airfare, if applicable.
- 95 to 65 days prior, \$100.00 penalty per person plus any applicable airline fee.
- 64 to 46 days prior, \$150.00 penalty per person plus any applicable airline fee.
- 45 to 36 days prior, \$200.00 penalty per person plus any applicable airline fee.
- 35 to 10 days prior, penalty of 50% of the total land/sea cost per person plus any applicable airline fee.
- 9 days prior, penalty of 100% of the total land/sea cost per person plus any applicable airline fee.

LUGGAGE:

Luggage is restricted to one small carry-on and one checked bag. Extra bag charge is \$3.00 per day, per bag. Customs officials in Greece demand that each passenger carry his or her own luggage—strictly enforced.

TOUR COST:

Quoted prices include air (if applicable), airport taxes (if applicable), tips, visas (for American citizens), port and fuel charges, standard inside cabin on cruise, hotels, and meals as described in brochure. Prices are based on currency rate at time of printing. In the event of increased airport taxes, Homeric Tours reserves the right to increase said taxes. Should the group NOT reach the minimum number of 40 passengers, Homeric Tours reserves the right to increase tour price.

TRANSFERS:

Roundtrip airport transfers are for group flights only, no reduction in price for unused transfers.

INSURANCE:

Insurance is offered and recommended by Homeric Tours. For more information and to review insurance certificate, please go to www.tripmate.com/Tmwebsite/index.php/c_main/PlanPg, click "View Plan Certificate/Policy" and enter F423H in the "Plan Number" field, or call (800) 888-7292.

Cost of insurance is \$155.00 per person for trip cost up to \$3500.00 and \$185.00 per person for trip cost over \$3500.00 (includes single supplement fees and cruise cabin upgrades).

RESPONSIBILITY CLAUSE:

Additional expenses incurred as a result of delay, change of schedules, illness, weather, strikes, hostilities, quarantine, government requisition of hotel space or any other reasons beyond the control of the tour operator, travel agent, parish, priest or group leader shall be borne by the passenger. Tour operator reserves the right to substitute hotels of similar quality if necessary and to alter itineraries.